

Report No.:

Test Time: 2023/2/18 10:52:21

LUMINAIRE PHOTOMETRIC TEST REPORT

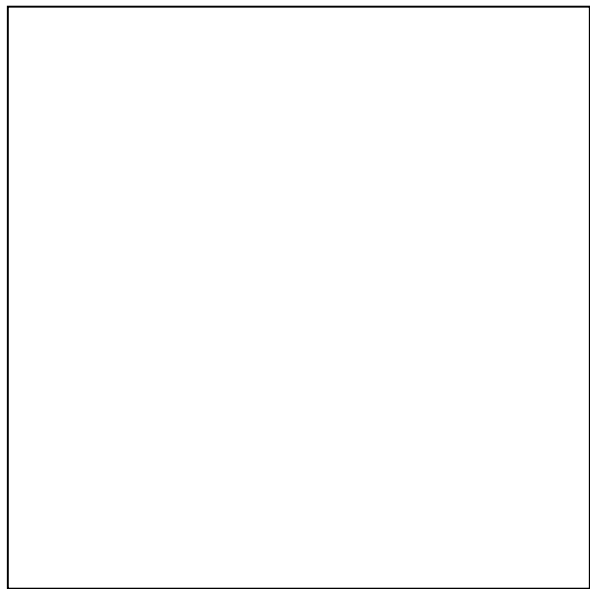
Luminaire Property

Manufacturer:	Voltage(V): 224.72 V
Luminaire Type: LT-004289	Current(A): 0.0450 A
Lamp Type: SST-20 3000K Ra95	Power(W): 9.76 W
Luminous Width: 200 mm	Power Factor: 0.9640
Luminous Length: 200 mm	Lamp Luminous Flux: 749.19
Luminous Height: 50 mm	

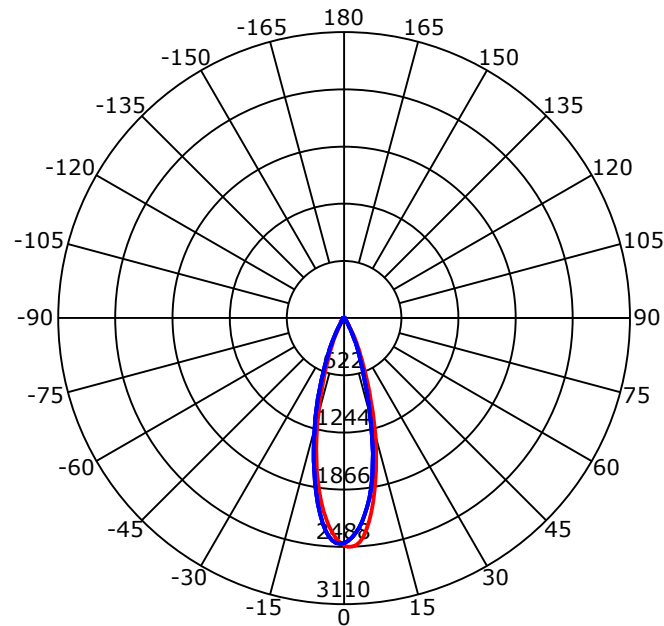
Photometric Results

CIE Class: Direct	Max. Intensity: 2488.33 cd
Luminaire Luminous Flux: 749.1879	Max.Intensity Angle: C=0 Gamma=1
Downward Ratio: 100.00%	Upward Ratio: 0.00%
Luminaire Efficacy Rating(LER): 76.80 lm/W	Efficacy: 100.00%
Beam Angle(50%) C0-180,C90-270: 29.2,29.1	Center Intensity: 2472.45 cd
Field Angle(10%) C0-180,C90-270: 53.3,53.6	Effective Luminous Flux: 645.72 lm

Picture of Luminaire



Luminous Intensity Distribution Curve



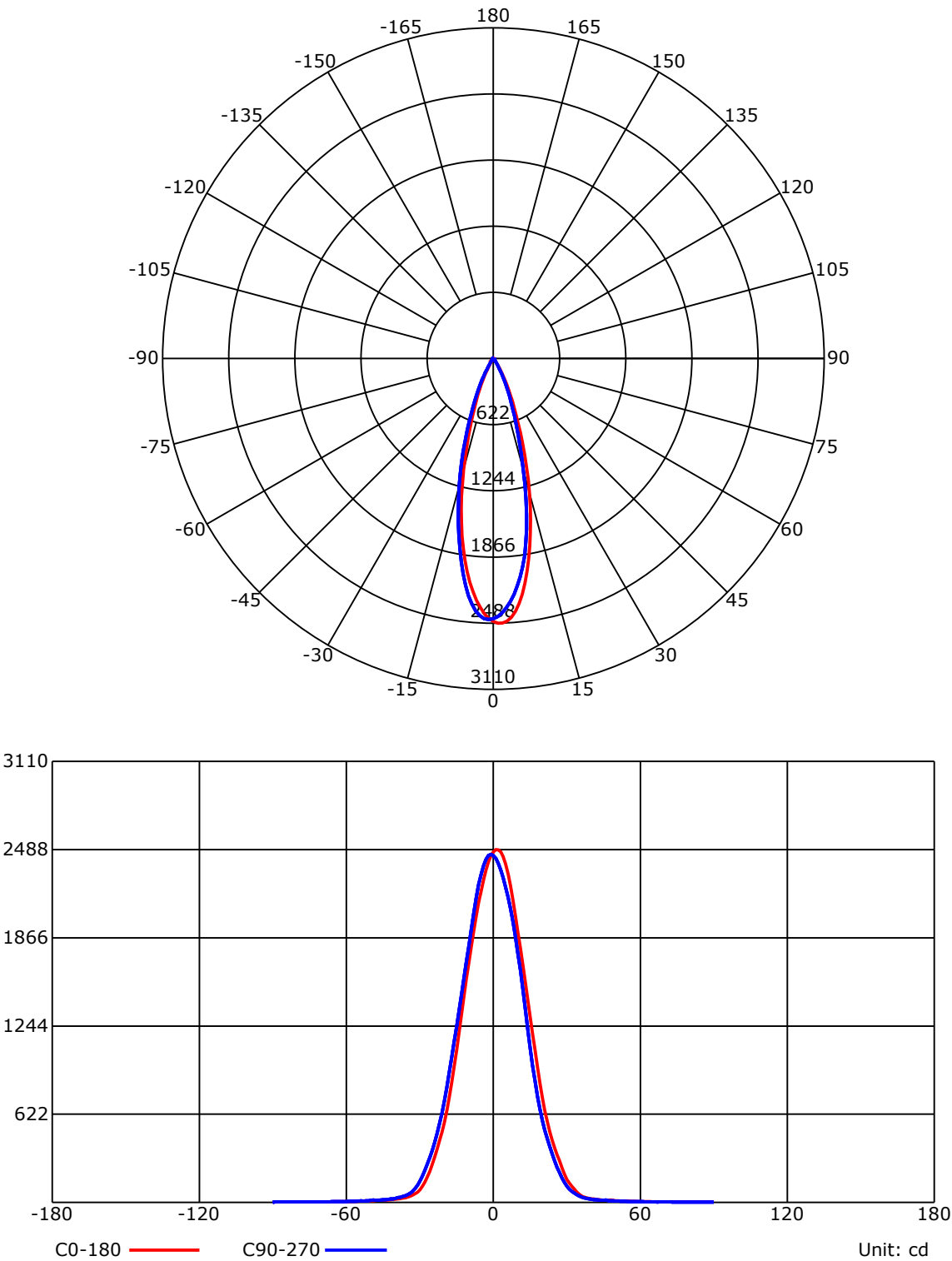
Beam Angle(50%) C0-180,C90-270: 29.2 deg,29.1 deg

C0-180 C90-270

C Range: 0 - 360 Deg
C Interval: 30.0 Deg
Test Speed: High
Temperature: 7.18
Operators:
Test Date: 2023/2/18 10:52:21

G Range: 0 - 90 Deg
G Interval: 1.0 Deg
Test System: Huipu CPM-1800 Goniophotometer
Humidity: 1
Test Distance: 6.99 m
Remarks:

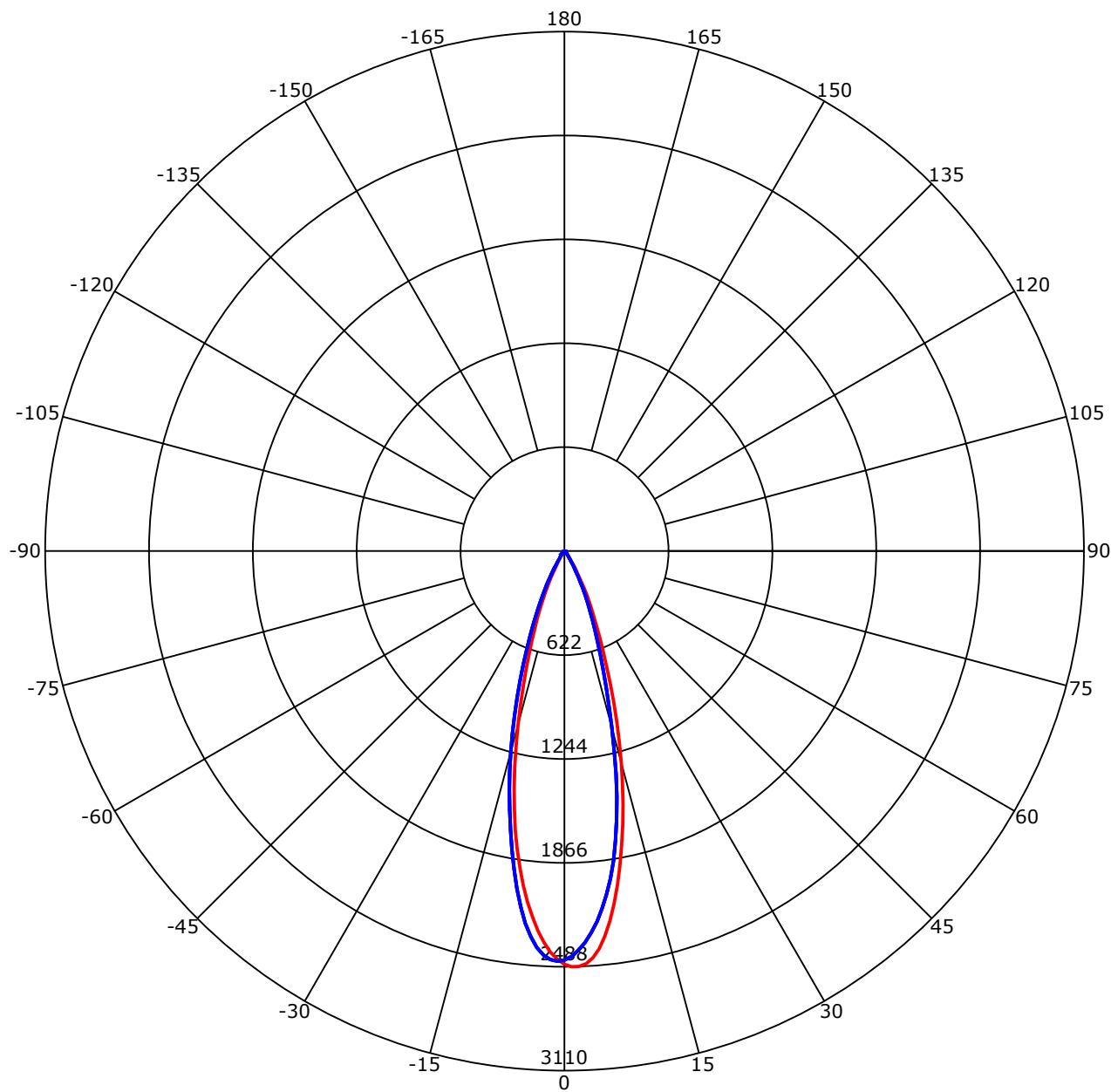
Luminous Intensity Distribution Curve



C Range: 0 - 360 Deg
C Interval: 30.0 Deg
Test Speed: High
Temperature: 7.18
Operators:
Test Date: 2023/2/18 10:52:21

G Range: 0 - 90 Deg
G Interval: 1.0 Deg
Test System: Huipu CPM-1800 Goniophotometer
Humidity: 1
Test Distance: 6.99 m
Remarks:

Luminous Intensity Distribution Curve

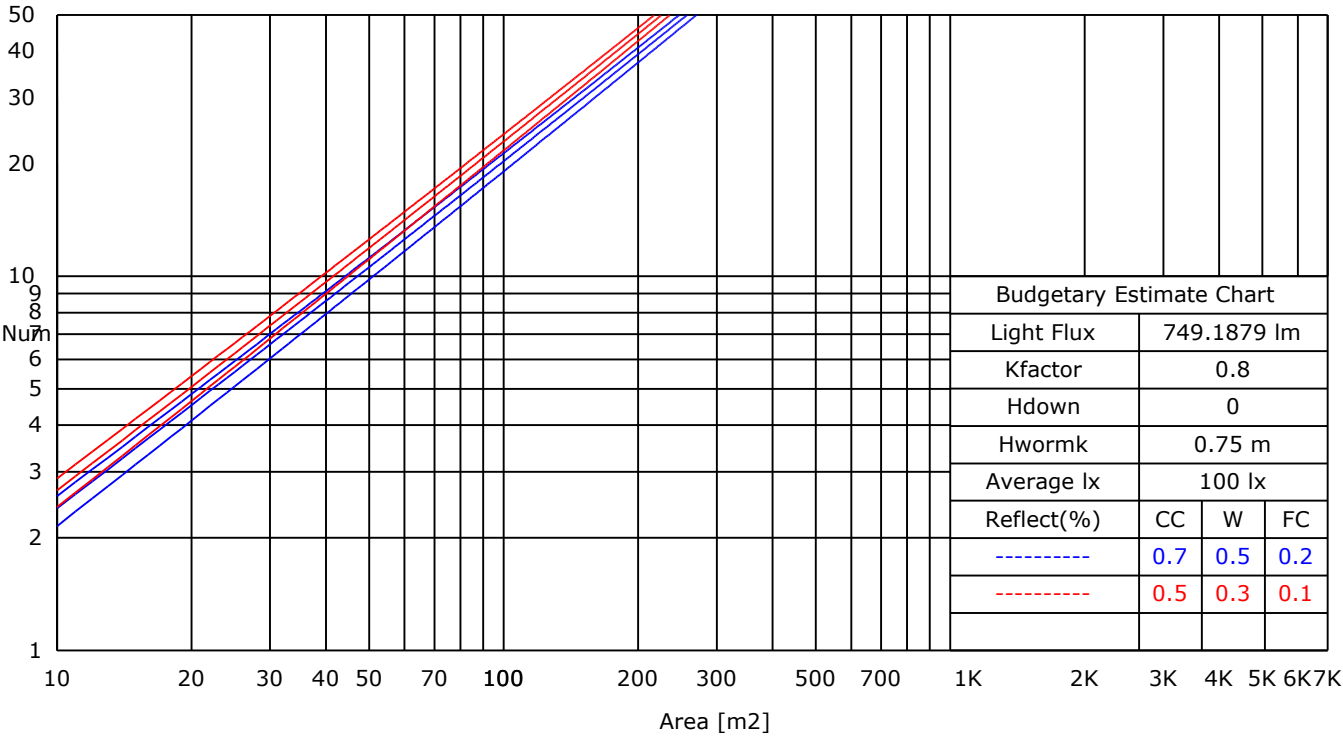


C0-180 — C90-270
Unit: cd/klm

UTILIZATION FACTORS TABLE

RHOCC	80			70			50			30			10			0
RHOW	50	30	10	50	30	10	50	30	10	50	30	10	50	30	10	0
RCR	COEFFCIENTS OF UTILIZATION FOR RHOFC=20															
0	1.19	1.19	1.19	1.16	1.16	1.16	1.11	1.11	1.11	1.06	1.06	1.06	1.02	1.02	1.02	1.00
1	0.92	0.89	0.86	0.91	0.88	0.85	0.88	0.85	0.82	0.85	0.81	0.77	0.79	0.75	0.72	0.67
2	0.88	0.85	0.83	0.87	0.84	0.82	0.85	0.82	0.79	0.82	0.78	0.75	0.77	0.73	0.70	0.65
3	0.85	0.83	0.81	0.85	0.82	0.80	0.83	0.79	0.76	0.80	0.76	0.72	0.76	0.72	0.68	0.63
4	0.83	0.81	0.79	0.82	0.79	0.78	0.80	0.77	0.74	0.78	0.74	0.70	0.74	0.70	0.66	0.62
5	0.81	0.79	0.78	0.80	0.78	0.76	0.78	0.75	0.72	0.76	0.72	0.69	0.73	0.68	0.65	0.61
6	0.79	0.77	0.76	0.78	0.76	0.74	0.76	0.73	0.71	0.74	0.70	0.67	0.71	0.67	0.63	0.60
7	0.77	0.76	0.75	0.77	0.74	0.73	0.75	0.72	0.69	0.73	0.69	0.66	0.70	0.66	0.62	0.59
8	0.76	0.74	0.73	0.75	0.73	0.72	0.73	0.70	0.68	0.71	0.67	0.65	0.69	0.64	0.61	0.58
9	0.74	0.73	0.72	0.74	0.72	0.71	0.72	0.69	0.67	0.70	0.66	0.64	0.68	0.63	0.60	0.57
10	0.73	0.72	0.71	0.72	0.71	0.69	0.71	0.68	0.66	0.69	0.65	0.63	0.66	0.62	0.59	0.56

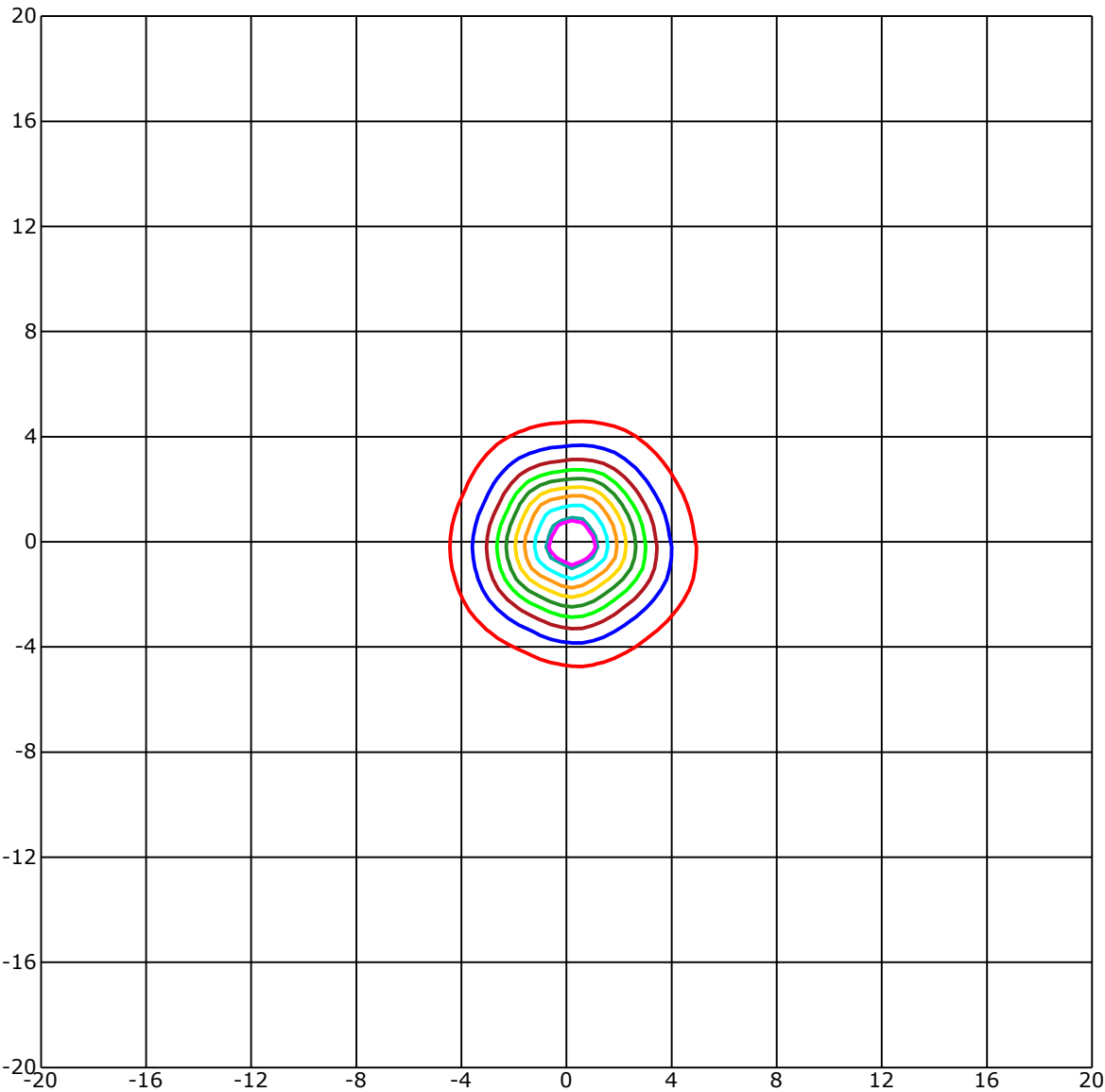
LUMINAIRE BUDGETARY ESTIMATE DIAGRAM



C Range: 0 - 360 Deg
C Interval: 30.0 Deg
Test Speed: High
Temperature: 7.18
Operators:
Test Date: 2023/2/18 10:52:21

G Range: 0 - 90 Deg
G Interval: 1.0 Deg
Test System: Huipu CPM-1800 Goniophotometer
Humidity: 1
Test Distance: 6.99 m
Remarks:

ISOLX DIAGRAM



Unit of illumination:lx Height of plane:10.0(m)/32.81(ft)

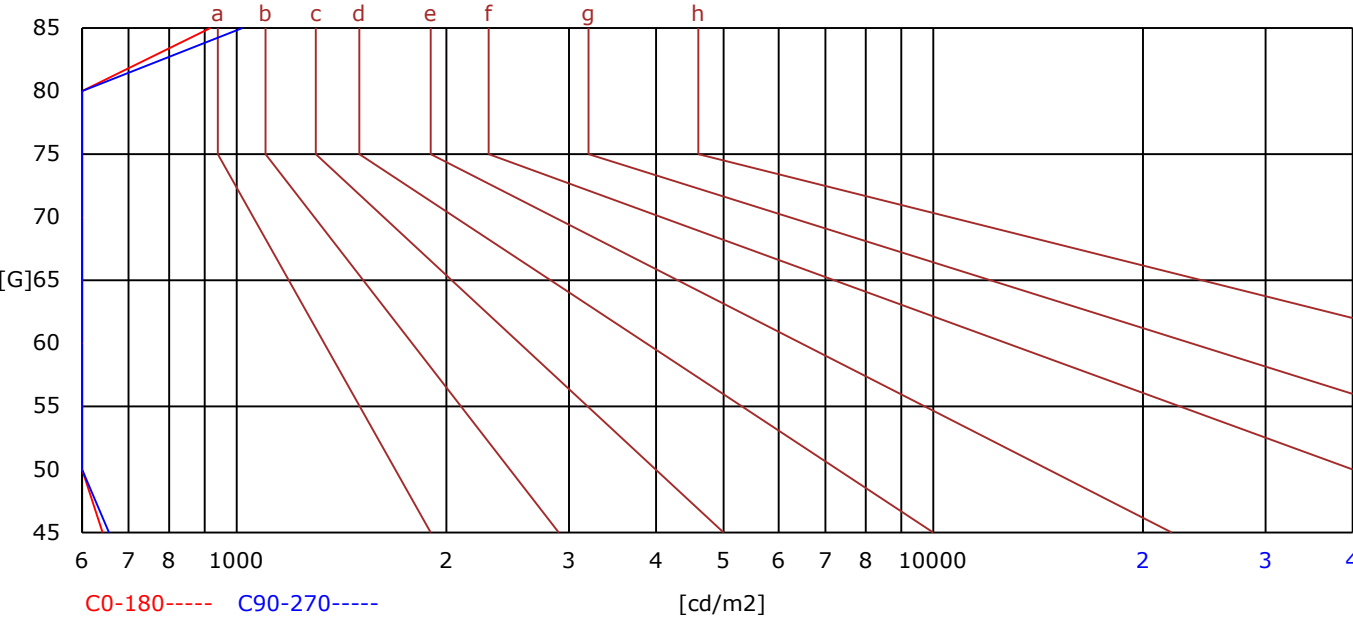
- | | |
|-----------------------------|-----------------------------|
| 22.882(1%E _{max}) | 12.436(0%E _{max}) |
| 22.385(1%E _{max}) | 9.949(0%E _{max}) |
| 19.898(1%E _{max}) | 7.462(0%E _{max}) |
| 17.41(1%E _{max}) | 4.974(0%E _{max}) |
| 14.923(1%E _{max}) | 2.487(0%E _{max}) |

C Range: 0 - 360 Deg
C Interval: 30.0 Deg
Test Speed: High
Temperature: 7.18
Operators:
Test Date: 2023/2/18 10:52:21

G Range: 0 - 90 Deg
G Interval: 1.0 Deg
Test System: Huipu CPM-1800 Goniophotometer
Humidity: 1
Test Distance: 6.99 m
Remarks:

BRIGHT LIMIT DIAGRAM

C/G	45	50	55	60	65	70	75	80	85
C0	642	477	400	330	354	249	319	475	917
C90	656	555	413	335	357	286	359	520	1020
Dazzle	Quality	Illuminance	---	---	---	---	---	---	---
1.15	A	2000	1000	500	<=300				
1.5	B		2000	1000	500	<=300			
1.85	C			2000	1000	500	<=300		
2.2	D				2000	1000	500	<=300	
2.55	E					2000	1000	500	<=300
---	---	a	b	c	d	e	f	g	h



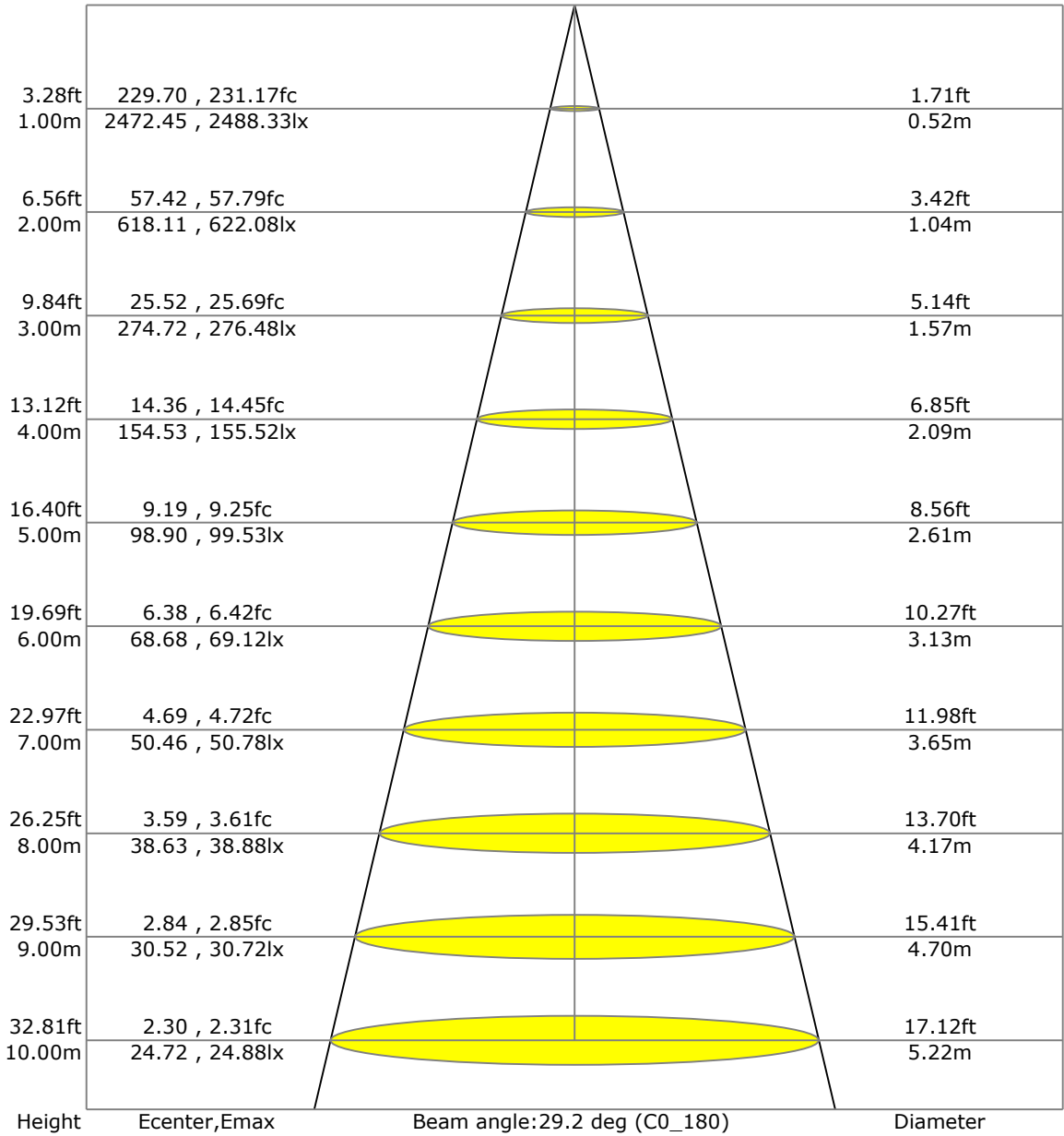
C Range: 0 - 360 Deg
C Interval: 30.0 Deg
Test Speed: High
Temperature: 7.18
Operators:
Test Date: 2023/2/18 10:52:21

G Range: 0 - 90 Deg
G Interval: 1.0 Deg
Test System: Huipu CPM-1800 Goniophotometer
Humidity: 1
Test Distance: 6.99 m
Remarks:

Report No.:

Test Time: 2023/2/18 10:52:21

LX-DISTANCE DIAGRAM



C Range: 0 - 360 Deg
C Interval: 30.0 Deg
Test Speed: High
Temperature: 7.18
Operators:
Test Date: 2023/2/18 10:52:21

G Range: 0 - 90 Deg
G Interval: 1.0 Deg
Test System: Huipu CPM-1800 Goniophotometer
Humidity: 1
Test Distance: 6.99 m
Remarks:

Report No.:

Test Time: 2023/2/18 10:52:21

UGR(Unified Glare Rating) TABLE

RHOCC	70	70	50	50	30	70	70	50	50	30
RHOW	70	70	50	50	30	70	70	50	50	30
RHOF	20	20	20	20	20	20	20	20	20	20
Room Size X Y	Viewed Endwise					Viewed Crosswise				
2H 2H	4.11	4.16	4.31	4.35	4.59	4.16	4.22	4.36	4.40	4.65
3H	4.13	4.19	4.34	4.38	4.63	4.17	4.23	4.38	4.42	4.67
4H	4.13	4.19	4.34	4.39	4.63	4.17	4.23	4.38	4.43	4.68
6H	4.13	4.18	4.34	4.39	4.64	4.17	4.22	4.38	4.42	4.68
8H	4.12	4.18	4.34	4.38	4.63	4.16	4.22	4.38	4.42	4.67
12H	4.11	4.17	4.33	4.37	4.63	4.15	4.21	4.37	4.41	4.67
4H 2H	4.83	4.89	5.04	5.08	5.33	4.93	4.98	5.14	5.18	5.43
3H	4.99	5.04	5.21	5.25	5.51	5.09	5.15	5.31	5.35	5.61
4H	5.06	5.12	5.29	5.33	5.59	5.15	5.21	5.38	5.42	5.68
6H	5.12	5.18	5.36	5.40	5.66	5.20	5.26	5.44	5.48	5.74
8H	5.14	5.20	5.39	5.43	5.69	5.22	5.27	5.46	5.50	5.77
12H	5.15	5.20	5.40	5.43	5.71	5.22	5.28	5.47	5.51	5.78
8H 4H	5.75	5.81	5.97	6.01	6.26	5.82	5.87	6.04	6.08	6.33
6H	6.65	6.71	6.91	6.95	7.22	6.78	6.84	7.04	7.08	7.35
8H	6.78	6.83	7.04	7.08	7.35	6.90	6.95	7.16	7.20	7.47
12H	6.88	6.93	7.15	7.19	7.47	6.98	7.03	7.25	7.29	7.57
12H 4H	7.19	7.25	7.44	7.48	7.75	7.29	7.34	7.54	7.58	7.85
6H	7.59	7.64	7.85	7.89	8.17	7.72	7.77	7.98	8.02	8.30

C Range: 0 - 360 Deg
C Interval: 30.0 Deg
Test Speed: High
Temperature: 7.18
Operators:
Test Date: 2023/2/18 10:52:21

G Range: 0 - 90 Deg
G Interval: 1.0 Deg
Test System: Huipu CPM-1800 Goniophotometer
Humidity: 1
Test Distance: 6.99 m
Remarks:

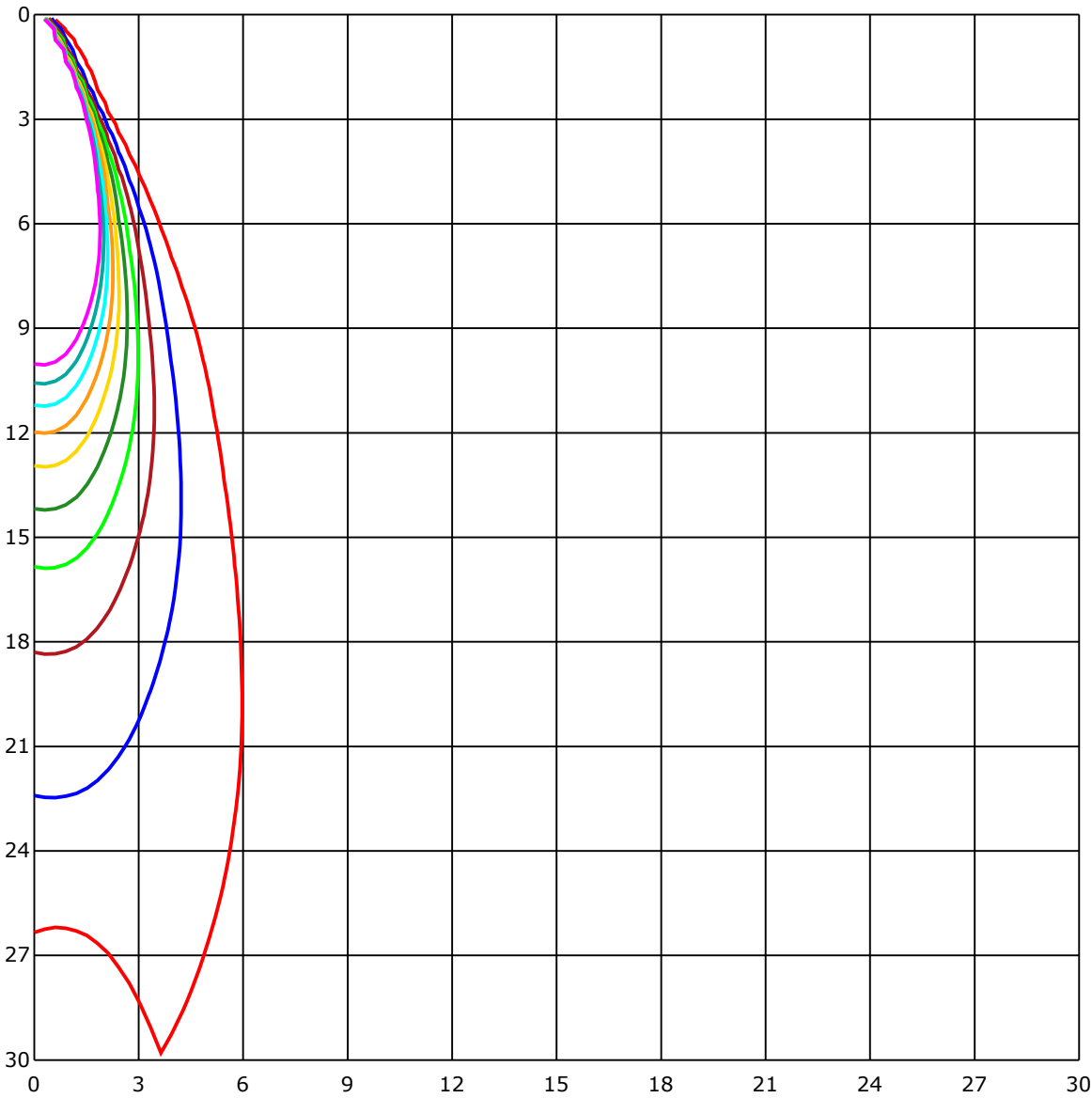
ZONAL LUMINOUS FLUX TABLE

[illegible]

C Range: 0 - 360 Deg
C Interval: 30.0 Deg
Test Speed: High
Temperature: 7.18
Operators:
Test Date: 2023/2/18 10:52:21

G Range: 0 - 90 Deg
G Interval: 1.0 Deg
Test System: Huipu CPM-1800 Goniophotometer
Humidity: 1
Test Distance: 6.99 m
Remarks:

SPACE ISOLX DIAGRAM



Unit of illumination:lx

- | | |
|--------|--------|
| 24.616 | 12.308 |
| 22.155 | 9.847 |
| 19.693 | 7.385 |
| 17.231 | 4.923 |
| 14.77 | 2.462 |

LUMINOUS DISTRIBUTION INTENSITY DATA

Gamma\C	C0	C30	C60	C90	C120	C150	C180	C210	C240	C270
G0	2472.45	2461.94	2451.68	2447.55	2458.79	2445.23	2472.45	2461.94	2451.68	2447.55
G1	2488.33	2463.9	2453.48	2427.24	2437.55	2406.67	2443.53	2445.8	2433.89	2454.67
G2	2487.25	2450.34	2441.88	2390.43	2403.27	2354.81	2402.5	2415.13	2400.64	2446.94
G3	2473.02	2423.53	2414.2	2345.79	2355.53	2295.47	2345.53	2368.11	2350.84	2421.26
G4	2440.34	2384.2	2376.88	2290.68	2298.21	2226.55	2277.84	2307.74	2287.38	2378.37
G5	2388.47	2327.02	2327.28	2226.03	2234.75	2148.6	2199.33	2235.88	2208.3	2317.9
G6	2316.3	2253.82	2265.99	2150.15	2160.41	2057.46	2113.8	2152.06	2115.04	2242.22
G7	2231.24	2172.83	2192.88	2068.59	2079.01	1964.46	2017.66	2056.27	2014.67	2147.36
G8	2131.64	2082.41	2110.71	1978.74	1986.57	1861.51	1916.36	1956.88	1906.72	2042.15
G9	2023.69	1982.19	2020.08	1876.15	1885.99	1749.38	1809.23	1851.61	1793.35	1931.0
G10	1908.57	1872.23	1918.42	1757.94	1774.64	1628.59	1697.31	1744.28	1677.82	1816.04
G11	1792.94	1761.96	1805.62	1635.76	1654.16	1506.1	1576.11	1625.09	1564.31	1696.59
G12	1676.38	1642.41	1684.58	1504.66	1525.23	1377.07	1452.08	1508.53	1450.84	1581.42
G13	1557.6	1517.14	1557.19	1368.41	1391.81	1245.25	1326.86	1388.31	1335.47	1467.65
G14	1435.22	1383.46	1425.42	1226.07	1256.18	1109.82	1201.64	1268.09	1216.64	1356.14
G15	1315.31	1253.55	1287.62	1094.41	1122.81	986.15	1075.54	1142.97	1100.54	1242.62
G16	1194.01	1123.58	1153.12	968.93	995.89	870.36	954.6	1022.54	986.25	1131.58
G17	1072.24	997.38	1024.81	855.05	879.07	764.11	842.68	908.4	875.82	1022.34
G18	953.1	877.01	904.74	747.51	773.18	667.35	741.12	803.19	769.32	917.68
G19	843.5	772.0	793.39	657.96	679.67	587.49	648.17	702.14	673.43	813.14
G20	742.05	676.83	696.06	579.5	598.16	516.76	567.13	613.63	588.21	719.1
G21	650.02	593.21	612.91	510.88	528.0	453.25	496.4	534.96	511.04	631.98
G22	567.75	518.26	539.55	447.27	464.8	392.57	433.3	467.12	442.99	554.03
G23	498.92	456.29	475.16	393.09	407.32	337.87	373.75	403.81	382.73	484.03
G24	439.43	401.75	417.83	342.67	353.44	285.6	318.54	346.69	328.44	421.23
G25	385.77	352.21	365.97	294.62	303.54	236.47	267.2	293.49	278.02	365.76
G26	336.84	305.55	318.8	248.64	255.91	190.95	219.05	246.32	230.54	316.07
G27	291.58	264.1	273.74	208.74	211.21	153.78	177.08	201.31	188.22	267.66
G28	243.89	224.67	232.55	172.03	173.06	123.52	141.51	161.62	152.08	224.25
G29	198.94	188.01	195.54	141.41	140.53	99.81	113.47	129.76	121.72	184.82
G30	162.44	155.02	162.7	114.5	114.19	80.68	89.55	104.39	96.87	150.64
G31	138.42	127.39	135.07	94.96	94.34	67.28	72.17	85.68	78.72	120.74
G32	114.19	104.24	112.28	78.05	77.64	57.79	60.06	70.21	65.01	96.66
G33	93.98	84.96	93.46	66.09	65.37	50.62	51.09	60.11	55.26	78.46
G34	73.46	68.46	77.9	55.16	56.35	41.96	43.56	51.45	47.27	64.9
G35	59.54	59.39	66.19	46.45	49.39	37.38	37.79	44.23	42.02	55.21
G36	46.5	50.57	58.62	38.05	42.94	33.05	33.2	38.61	37.43	47.63

C Range: 0 - 360 Deg
C Interval: 30.0 Deg
Test Speed: High
Temperature: 7.18
Operators:
Test Date: 2023/2/18 10:52:21

G Range: 0 - 90 Deg
G Interval: 1.0 Deg
Test System: Huipu CPM-1800 Goniophotometer
Humidity: 1
Test Distance: 6.99 m
Remarks:

Report No.:

Test Time: 2023/2/18 10:52:21

LUMINOUS DISTRIBUTION INTENSITY DATA(Continue 1)

Gamma\C	C0	C30	C60	C90	C120	C150	C180	C210	C240	C270
G37	38.72	42.94	50.83	32.99	38.35	29.08	29.69	34.33	32.99	42.12
G38	33.05	37.68	43.56	28.71	34.44	26.24	27.07	33.3	29.44	35.67
G39	28.77	33.05	38.46	25.05	33.87	24.18	24.33	28.66	27.53	33.82
G40	25.67	29.13	34.08	23.46	28.66	21.55	23.51	25.83	24.54	28.56
G41	24.23	26.19	30.47	20.16	25.78	19.69	20.57	24.07	24.13	25.47
G42	20.98	24.28	27.84	18.77	24.23	18.77	19.74	21.76	20.78	24.28
G43	19.64	21.29	24.33	16.65	21.45	16.75	17.68	20.05	19.69	21.24
G44	17.94	19.59	22.17	15.41	19.8	15.47	16.39	19.49	17.73	19.69
G45	16.39	18.15	20.05	15.52	18.56	15.41	15.41	17.17	16.29	18.61
G46	15.36	16.24	19.18	17.37	16.81	17.53	15.47	15.93	15.36	16.86
G47	15.36	15.36	17.01	12.01	15.57	13.4	17.63	15.41	15.47	15.57
G48	17.79	15.36	15.62	11.03	15.52	11.55	13.61	15.72	17.89	15.47
G49	13.71	17.84	15.41	10.88	16.91	10.93	11.91	17.68	12.58	16.65
G50	11.7	12.27	17.12	10.72	14.28	10.88	11.19	12.37	11.39	16.19
G51	11.08	11.34	14.38	9.43	11.7	10.83	10.77	11.39	10.83	11.86
G52	10.77	10.83	11.81	8.4	10.98	9.59	10.88	10.88	10.98	11.14
G53	10.83	10.83	11.14	7.84	10.83	8.61	10.31	10.77	10.36	10.83
G54	9.95	10.57	10.72	7.37	10.72	7.94	9.12	10.72	9.02	10.93
G55	8.97	9.18	10.77	6.86	9.49	7.48	8.4	9.74	8.35	10.31
G56	8.3	8.51	9.95	6.55	8.51	7.01	7.84	8.66	7.84	8.92
G57	7.89	7.94	8.82	6.5	8.04	6.65	7.53	8.04	7.32	8.35
G58	7.42	7.42	8.15	6.55	7.58	6.5	7.01	7.68	6.96	7.78
G59	6.96	7.01	7.73	6.6	7.06	6.5	6.65	7.22	6.6	7.27
G60	6.65	6.6	7.22	6.34	6.7	6.6	6.44	6.7	6.5	6.86
G61	6.44	6.55	6.86	5.36	6.5	6.55	6.5	6.55	6.5	6.55
G62	6.5	6.44	6.55	4.49	6.5	5.88	6.39	6.5	6.5	6.55
G63	6.44	6.44	6.5	4.18	6.5	4.9	6.65	6.5	6.29	6.55
G64	6.5	6.44	6.5	3.87	6.5	4.38	5.88	6.65	5.67	6.6
G65	5.1	5.98	6.55	3.51	6.03	4.02	5.26	6.24	4.64	6.29
G66	4.64	5.0	6.44	3.35	5.05	3.66	4.28	5.72	4.07	5.67
G67	4.07	4.33	5.77	3.3	4.38	3.51	4.23	4.74	3.81	4.18
G68	3.56	3.92	4.49	3.35	4.07	3.35	4.18	4.23	3.51	4.07
G69	3.51	3.61	4.18	3.35	4.02	3.4	4.07	3.92	3.35	3.97
G70	3.45	3.4	3.97	3.35	3.92	3.4	3.97	3.87	3.3	3.97
G71	3.51	3.35	4.02	3.35	3.87	3.3	3.92	3.76	3.3	3.92
G72	3.51	3.35	3.92	3.35	3.81	3.3	3.92	3.81	3.35	3.81
G73	3.4	3.4	3.87	3.25	3.81	3.35	3.92	3.76	3.3	3.76

C Range: 0 - 360 Deg
C Interval: 30.0 Deg
Test Speed: High
Temperature: 7.18
Operators:
Test Date: 2023/2/18 10:52:21

G Range: 0 - 90 Deg
G Interval: 1.0 Deg
Test System: Huipu CPM-1800 Goniophotometer
Humidity: 1
Test Distance: 6.99 m
Remarks:

Report No.:

Test Time: 2023/2/18 10:52:21

LUMINOUS DISTRIBUTION INTENSITY DATA(Continue 2)

[illegible]

C Range: 0 - 360 Deg

C Interval: 30.0 Deg

Test Speed: High

Temperature: 7.18

Operators:

Test Date: 2023/2/18 10:52:21

G Range: 0 - 90 Deg

G Interval: 1.0 Deg

Test System: Huipu CPM-1800 Goniophotometer

Humidity: 1

Test Distance: 6.99 m

Remarks:

Report No.:

Test Time: 2023/2/18 10:52:21

LUMINOUS DISTRIBUTION INTENSITY DATA(Continue 3)

Gamma\C	C300	C330	C360							
G0	2458.79	2445.23	2472.45							
G1	2467.81	2470.6	2488.33							
G2	2458.59	2482.51	2487.25							
G3	2433.07	2476.89	2473.02							
G4	2388.84	2455.75	2440.34							
G5	2324.91	2413.89	2388.47							
G6	2240.83	2356.67	2316.3							
G7	2142.0	2275.32	2231.24							
G8	2031.84	2177.63	2131.64							
G9	1910.69	2064.36	2023.69							
G10	1786.96	1947.13	1908.57							
G11	1666.79	1821.6	1792.94							
G12	1548.53	1700.77	1676.38							
G13	1432.74	1582.87	1557.6							
G14	1318.35	1470.27	1435.22							
G15	1210.19	1354.23	1315.31							
G16	1102.45	1241.74	1194.01							
G17	995.22	1129.31	1072.24							
G18	890.88	1020.53	953.1							
G19	792.72	910.0	843.5							
G20	700.08	807.31	742.05							
G21	615.17	711.78	650.02							
G22	538.72	629.04	567.75							
G23	472.89	551.87	498.92							
G24	413.86	486.71	439.43							
G25	361.95	427.73	385.77							
G26	311.89	377.0	336.84							
G27	268.07	329.27	291.58							
G28	226.37	285.75	243.89							
G29	186.93	244.36	198.94							
G30	151.51	205.59	162.44							
G31	122.08	169.45	138.42							
G32	98.0	136.46	114.19							
G33	78.31	108.0	93.98							
G34	64.13	86.14	73.46							
G35	53.61	69.08	59.54							
G36	46.5	59.96	46.5							

C Range: 0 - 360 Deg
C Interval: 30.0 Deg
Test Speed: High
Temperature: 7.18
Operators:
Test Date: 2023/2/18 10:52:21

G Range: 0 - 90 Deg
G Interval: 1.0 Deg
Test System: Huipu CPM-1800 Goniophotometer
Humidity: 1
Test Distance: 6.99 m
Remarks:

Report No.:

Test Time: 2023/2/18 10:52:21

LUMINOUS DISTRIBUTION INTENSITY DATA(Continue 4)

Gamma\C	C300	C330	C360							
G37	41.96	50.83	38.72							
G38	34.8	43.46	33.05							
G39	34.18	38.1	28.77							
G40	28.61	33.56	25.67							
G41	25.62	29.95	24.23							
G42	24.23	27.74	20.98							
G43	21.29	24.38	19.64							
G44	19.69	23.2	17.94							
G45	18.35	20.57	16.39							
G46	16.55	19.69	15.36							
G47	15.41	17.73	15.36							
G48	15.52	16.45	17.79							
G49	17.53	15.47	13.71							
G50	12.89	15.41	11.7							
G51	11.6	17.63	11.08							
G52	10.93	14.43	10.77							
G53	10.88	11.96	10.83							
G54	10.72	11.14	9.95							
G55	9.59	10.77	8.97							
G56	8.61	10.83	8.3							
G57	8.09	10.36	7.89							
G58	7.63	9.18	7.42							
G59	7.17	8.51	6.96							
G60	6.75	8.04	6.65							
G61	6.5	7.58	6.44							
G62	6.6	7.11	6.5							
G63	6.6	6.7	6.44							
G64	6.5	6.5	6.5							
G65	5.83	6.44	5.1							
G66	5.0	6.55	4.64							
G67	4.23	6.6	4.07							
G68	3.87	6.08	3.56							
G69	3.51	5.26	3.51							
G70	3.25	4.33	3.45							
G71	3.2	3.97	3.51							
G72	3.25	3.81	3.51							
G73	3.25	3.81	3.4							

C Range: 0 - 360 Deg

C Interval: 30.0 Deg

Test Speed: High

Temperature: 7.18

Operators:

Test Date: 2023/2/18 10:52:21

G Range: 0 - 90 Deg

G Interval: 1.0 Deg

Test System: Huipu CPM-1800 Goniophotometer

Humidity: 1

Test Distance: 6.99 m

Remarks:

Report No.:

Test Time: 2023/2/18 10:52:21

LUMINOUS DISTRIBUTION INTENSITY DATA(Continue 5)

[illegible]

C Range: 0 - 360 Deg

C Interval: 30.0 Deg

Test Speed: High

Temperature: 7.18

Operators:

Test Date: 2023/2/18 10:52:21

G Range: 0 - 90 Deg

G Interval: 1.0 Deg

Test System: Huipu CPM-1800 Goniophotometer

Humidity: 1

Test Distance: 6.99 m

Remarks: