



LUMTECH

Profilé aluminium en saillie ou suspendu



LT-E100



Accessoires :



120°



90°



90°



180°



LT-E100-EXT



LT-E100-CLIP - M



LT-E100-KIT-SUSP

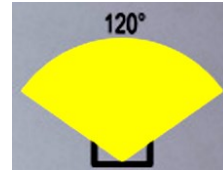
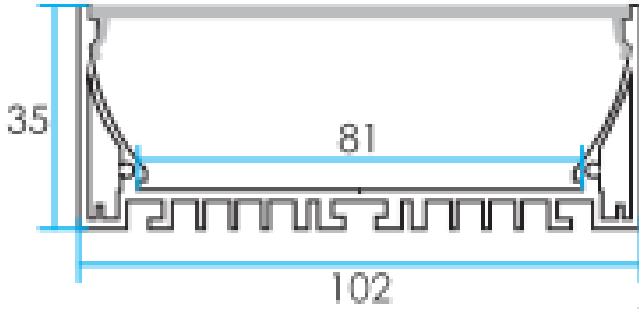


LUMTECH

Profilé aluminium en saillie ou suspendu



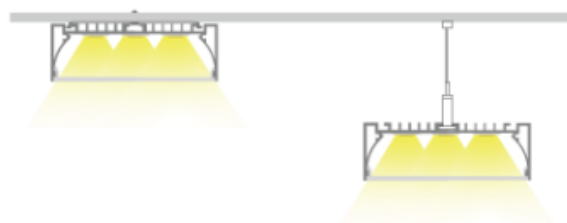
Dimensions :



Caractéristiques :

Code	LT-E100		
Dimensions	102mm * H35mm		
Réservation	-		
Puissance max du ruban	57.6W/m		
Largeur max du ruban	40 mm		
Longueur standard	2000 mm		
Matériaux	Aluminium		
Type d'aluminium	6063 T5		
Angle	120°		
Type de Diffuseur PMMA	LT-E100-DIFF-O		
	Opale		
Transmission de lumière	55%		
Accessoires	LT-E100-EXT	LT-E100-CLIP-M	LT-E100-KIT-SUSP
	Bouchon d'extrémité	Clip en métal	Kit de suspension
Certificats	CE - Cmim		
Garantie	3 ans		

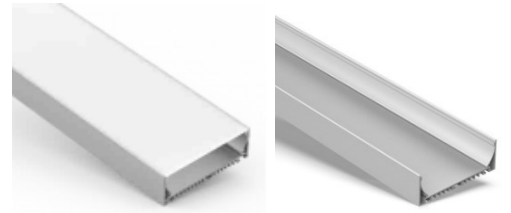
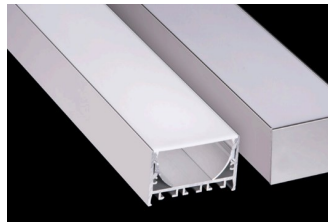
Installation :



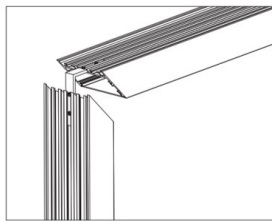


LUMTECH

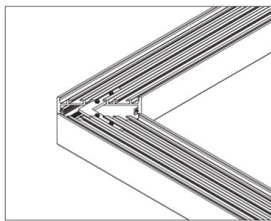
Profilé aluminium en saillie ou suspendu



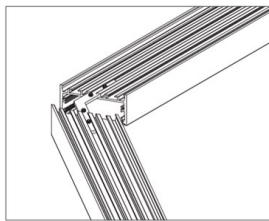
Installation accessoires d'assemblage :



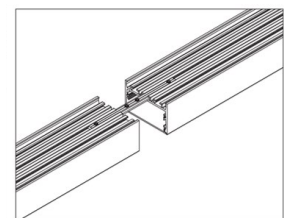
90°B



90°A



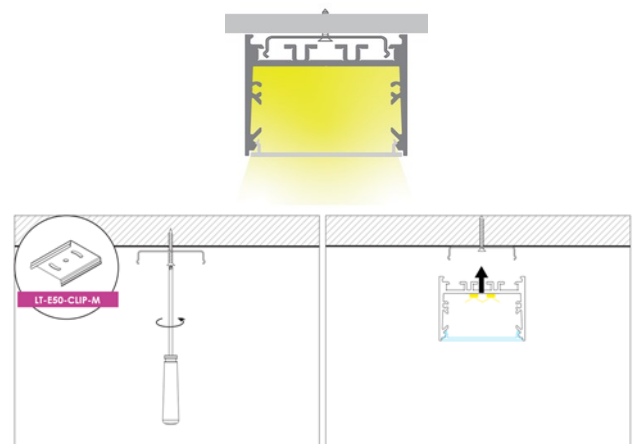
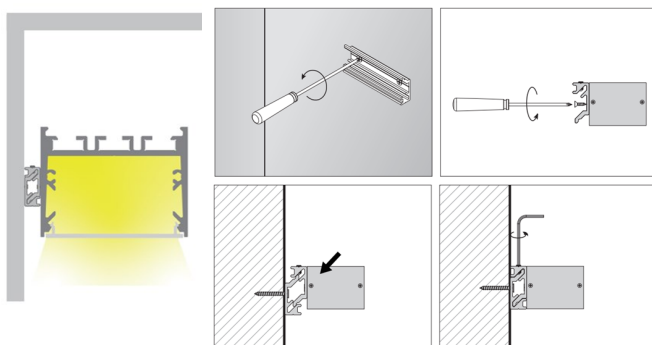
120°



180°



Installation en saillie :





LUMTECH

Profilé aluminium en saillie ou suspendu



Installation suspendue :

